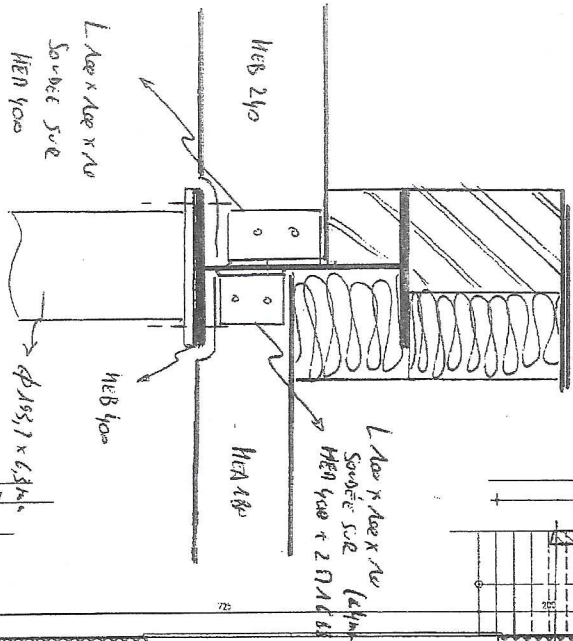


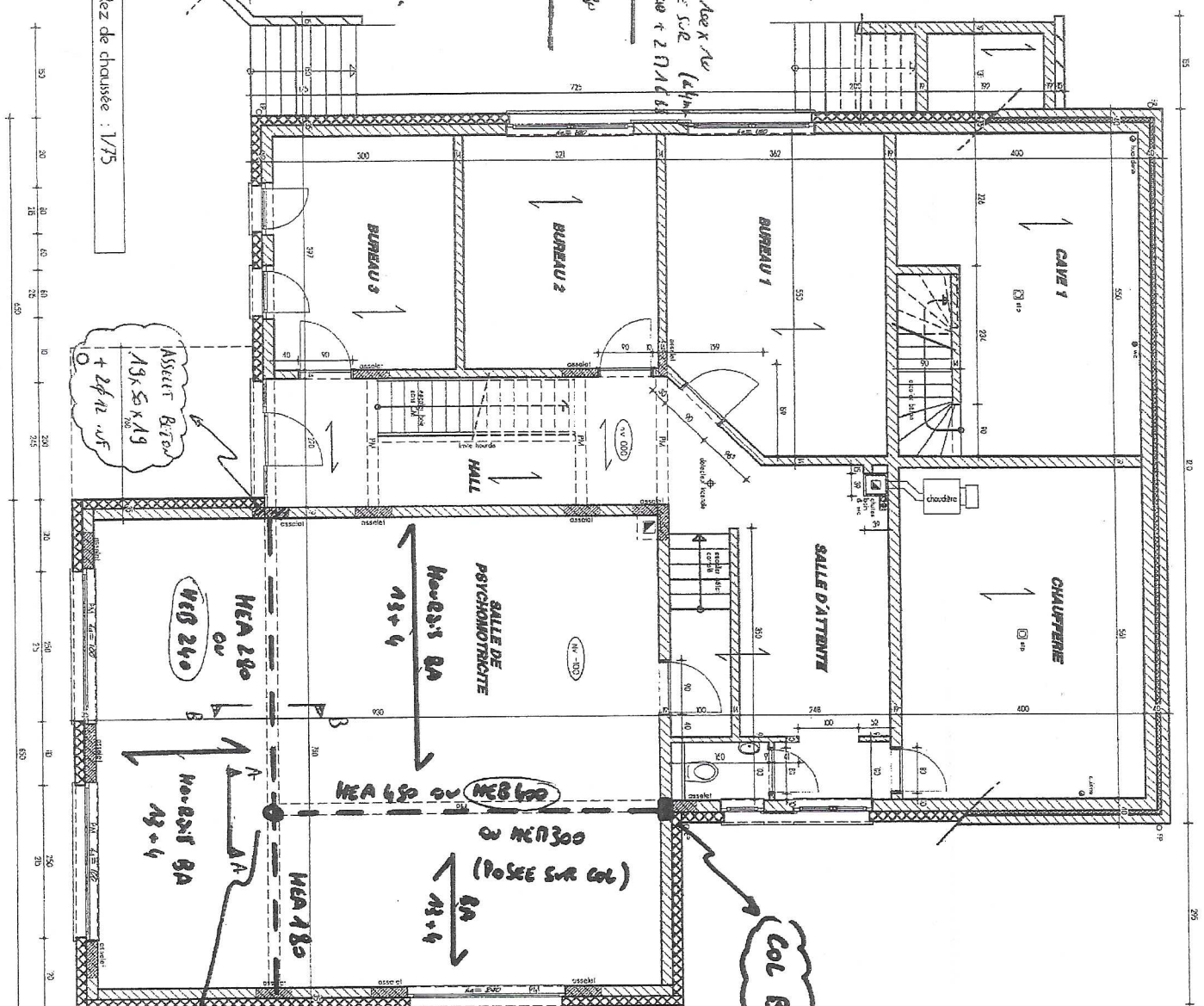
BOURILLIS S235  
REVUS C25/B30  
ACIER BE 500S  
Coulée BAte : 3m msi

VUE A-A.



Soudes continues (4 lms) DC3  
L'Acier x Acier x Acier sur L'Acier sur LA HEB 400

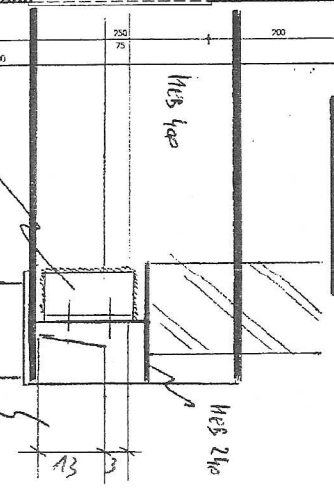
→ Rez de chaussée : 1/75



ASSISTANT BTON  
13x50x19  
+ 24/12 u.F.

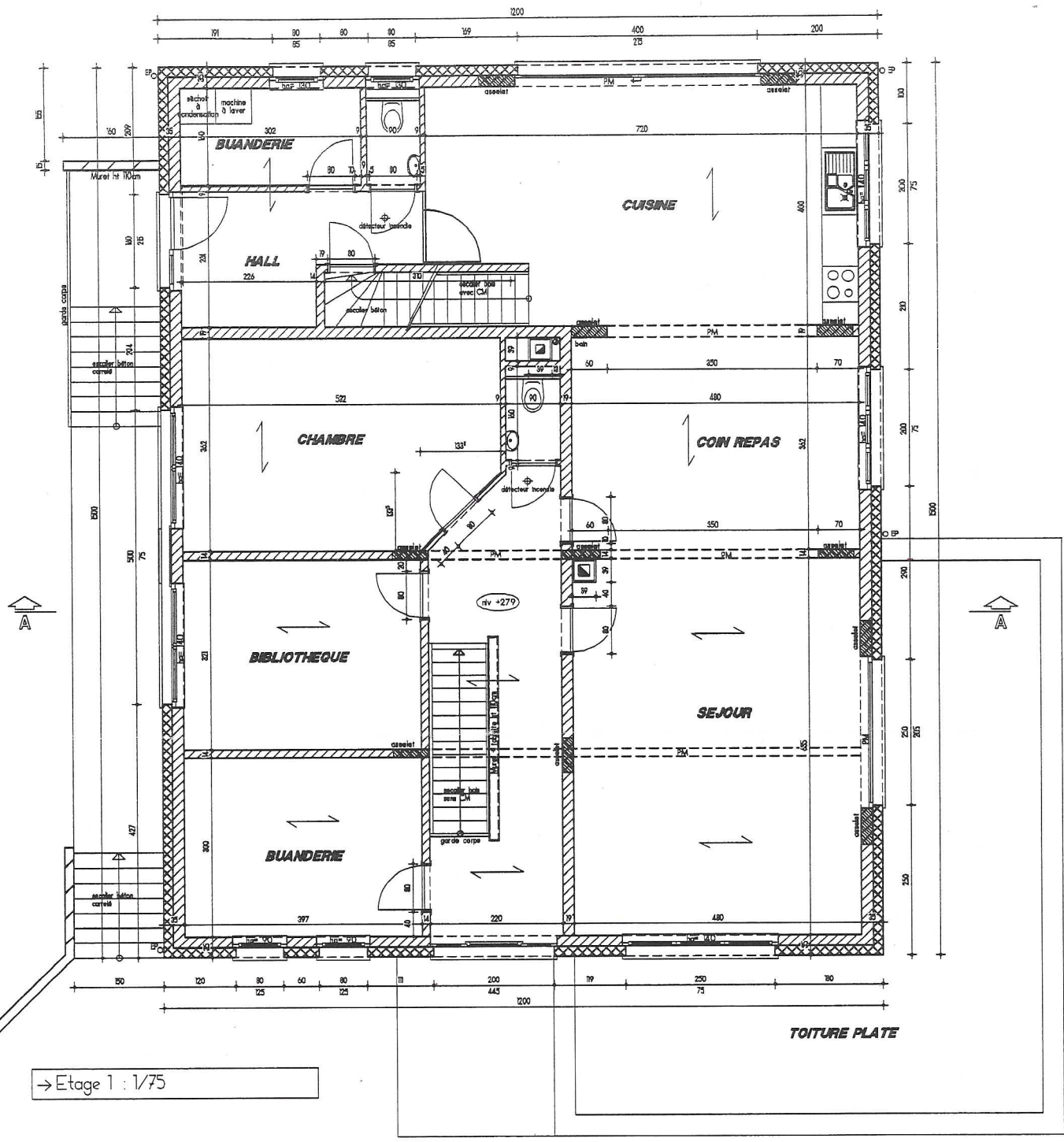
COL BA 19 x 30

VUE B.B.



COL. DETAIL.  
Ø 193,3mm x 6,33m  
+ Plancher EP 12mm inf et sup  
+ 4 Ø12  
Rmax = 30000 kg

B INGÉNIEURS



→ Etage 1 : 1/75

TOITURE PLATE

